

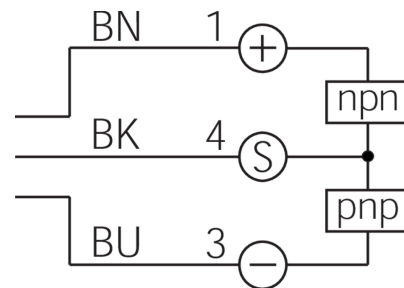
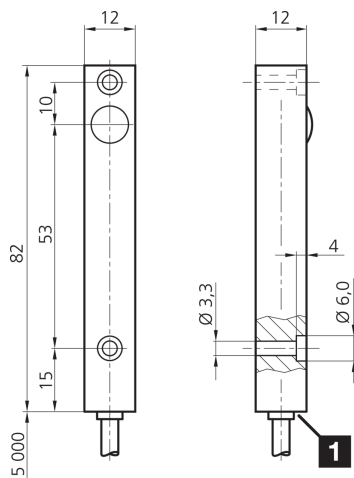


204169

OE PQ 12 M 5000 G2L-5M

High performance light barrier, receiver

- Range up to 5 m
- Integrated amplifier electronics
- Transistor output with push-pull
- High function reserve
- Extremely dirt-resistant
- Easy adjustment
- Different designs to be combined
- High protection type
- Compact design



1) LED

BK: black

BN: brown

BU: blue

#### Function



#### Technical data (typ.)

#### +20°C, 24 V DC

Service voltage	10 ... 35 V DC
No-load current (max.)	40 mA
Housing dimensions	82 x 12 x 12 mm
Housing length	82 mm
Housing height	12 mm
Housing width	12 mm
Housing material	Aluminum (Anodized)
Material of cable	PVC
Protection class	III, operation on protective low voltage
Operating principle	Through-beam sensor, receiver
Evaluation	digital
Design	Cuboid design
Characteristics	High transmit power and dirt penetration
Consisting of	Receiver
Switching output	Push-pull, 200 mA, NO
Ambient light immunity	15 kLx Sunlight, 2 kLx Clocked light
Range	0 ... 5000 mm (dependent on the transmitter)
Sensitivity adjustment	no setting elements
Switching frequency	500 Hz
Shock/vibration load	30 g, 11 ms / 10 ... 55 Hz, 2.0 mm

**204169****OEPQ 12 M 5000 G2L-5M****High performance light barrier, receiver****Technical data (typ.)****+20°C, 24 V DC**

Ambient temperature during operation

-20 ... +60 °C

Protection type

IP 67

Connection

Cable, 5.0 m

**More information / accessories**<https://www.di-soric.com/204169>