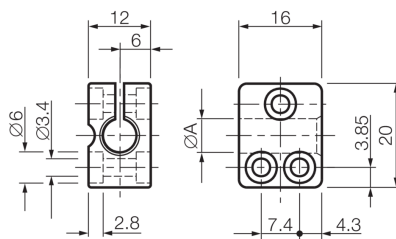




## 201630 SH 6.5 Sensor holder

- For cylindrical sensors of  $\varnothing 6.5$  mm
- Quick commissioning
- Reduced assembly / downtime due to one-piece construction
- Sensor replacement without changing the clamp position



### Technical data (typ.)

Mounting	Hole
Housing dimensions	12 x 16 x 20 mm
Clamping diameter	A: 6.5 mm
Housing material	Plastic (PA, 6 GK)
Component	Sensor holder
Characteristics	without limit stop
To be used for	Sensors $\varnothing 6.5$ mm
Scope of delivery	Sensor holder

### +20°C

### More information / accessories

<https://www.di-soric.com/201630>