

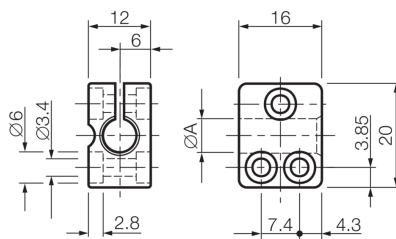


201628

SH 4

Sensor holder

- For cylindrical sensors of \varnothing 4 mm or thread M4
- Quick commissioning
- Reduced assembly / downtime due to one-piece construction
- Sensor replacement without changing the clamp position



Technical data (typ.)

Mounting	Hole
Housing dimensions	12 x 16 x 20 mm
Clamping diameter	A: 4.0 mm
Housing material	Plastic (PA, 6 GK)
Component	Sensor holder
Characteristics	without limit stop
To be used for	Sensors \varnothing 4 mm
Scope of delivery	Sensor holder

+20°C

More information / accessories

<https://www.di-soric.com/201628>