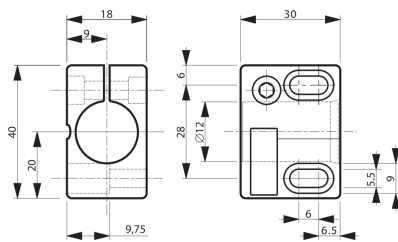




## 201622 SH 12 A Sensor holder

- For cylindrical sensors of Ø 12 mm or thread M12
- Quick commissioning
- Reduced assembly / downtime due to one-piece construction
- Sensor replacement without changing the clamp position
- Limit stop for sensor replacement without readjustment
- Slots permit clamp adjustment



### Technical data (typ.)

Hole spacing	28 mm
Mounting	Hole
Clamping diameter	G: 12 mm
Housing material	Plastic (PA, 6 GK)
Component	Sensor holder
Characteristics	with limit stop
To be used for	Sensors Ø 12 mm/ Thread M12
Scope of delivery	Sensor holder

### +20°C

### More information / accessories

<https://www.di-soric.com/201622>