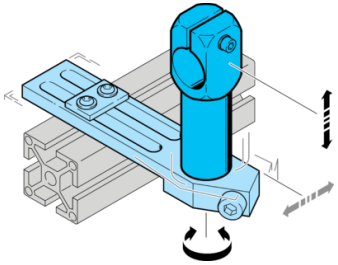
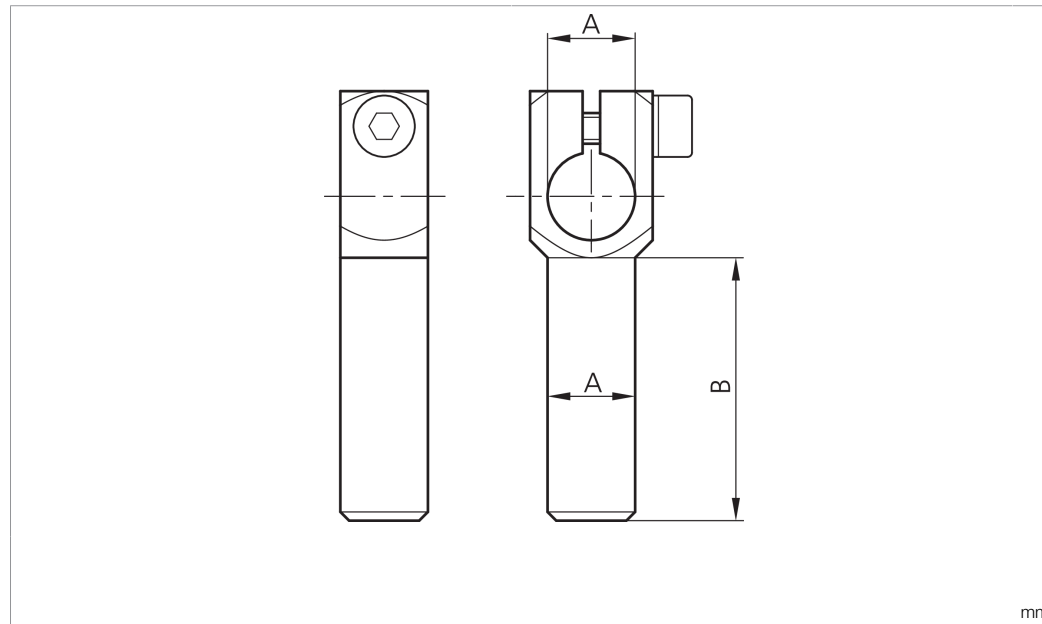


SH-WKA-20-20-150

Winkelarm
 Angle arm
 Bras d'équerrage



di-soric GmbH & Co. KG
 Steinbeisstraße 6
 DE-73660 Urbach
 Germany
 Tel: +49 (0) 7181/9879-0
 info@di-soric.com · www.di-soric.com



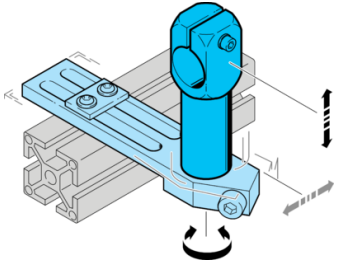
Technische Daten	Technical data	Caractéristiques techniques	
Produktserie	Product series	Gamme de produits	Z-UBT-KL-MS Montagesystem / Z-UBT-KL-MS Assembly system / Système de montage Z-UBT-KL-MS
Geeignet für	To be used for	Convient pour	Klemmbolzen 20 mm / Clamping pin 20 mm / Boulon de serrage 20 mm
Durchmesser A	Diameter A	Diamètre A	20 mm
Maß B	Dimension B	Dimension B	150 mm
Material	Material	Matériau	Metall / Metal / Métal

Stand 29.06.22, Änderungen vorbehalten
 As of 06/29/22, subject to change
 État 29.06.22, sous réserve de modifications



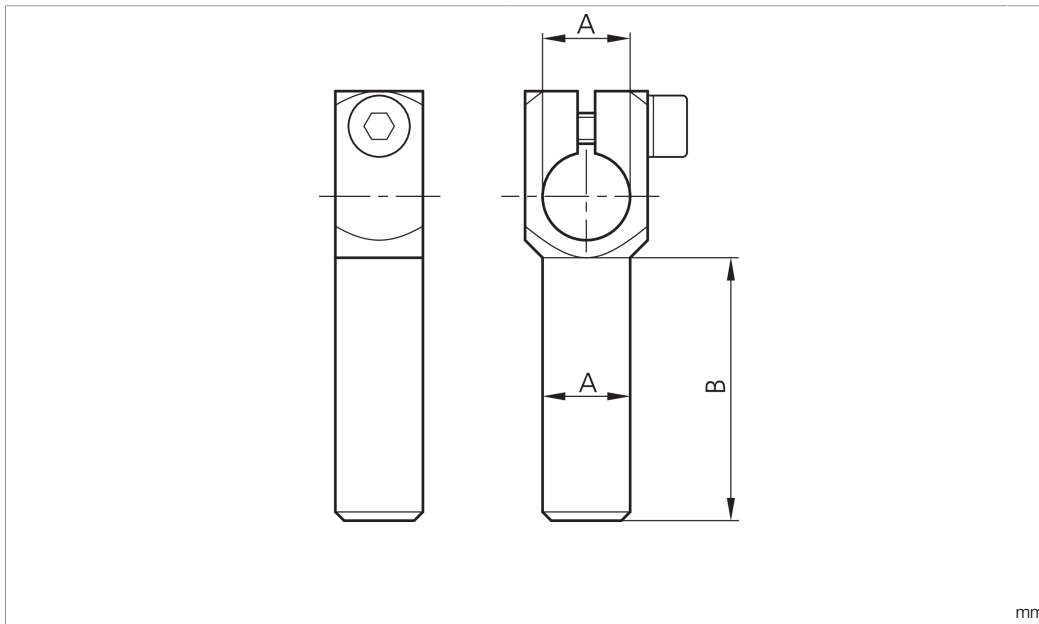
SH-WKA-20-20-150

Angle arm



di-soric GmbH & Co. KG
 Steinbeisstraße 6
 DE-73660 Urbach
 Germany
 Tel: +49 (0) 7181/9879-0
 info@di-soric.com · www.di-soric.com

203900



技术数据

产品系列	Z-UBT-KL-MS 安装系统
适合用于	夹紧螺栓 20 mm
直径 A	20 mm
尺寸 B	150 mm
材料	金属

版本 22.06.29, 保留变更权